

XLTI HT

Caratteristiche Tecniche

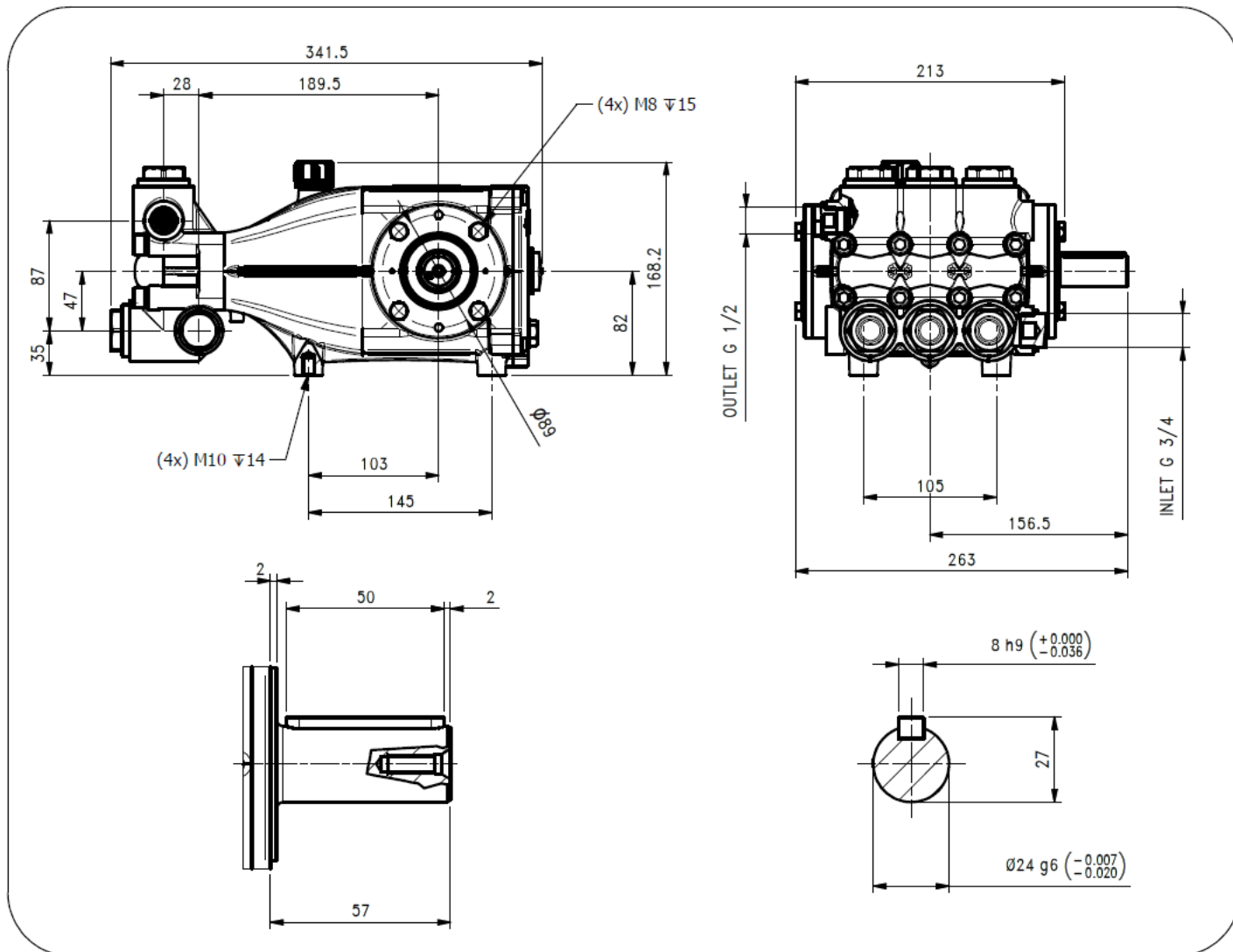
Albero maschio – Solid shaft

Technical Characteristics

| Pump Pompa | Pressure Pressione | | Volume Portata | | | | RPM giri/min | | Power Potenza | | | |
|---------------|-----------------------|------|-------------------|-------|-------|-------|-----------------|-------|------------------|-------|-------|-------|
| | | | l/min | | GPM | | | | HP | | kW | |
| | bar | PSI | 50 Hz | 60 Hz | 50 Hz | 60 Hz | 50 Hz | 60 Hz | 50 Hz | 60 Hz | 50 Hz | 60 Hz |
| XLT1520HTI | 200 | 2900 | 15 | 18 | 4.0 | 4.7 | 1450 | 1740 | 7.9 | 9.4 | 5.8 | 6.9 |
| XLT1820HTI | 200 | 2900 | 18 | 22 | 4.8 | 5.8 | 1450 | 1740 | 9.4 | 11.3 | 6.9 | 8.3 |
| XLT2220HTI | 200 | 2900 | 22 | 26 | 5.8 | 7.0 | 1450 | 1740 | 11.6 | 13.9 | 8.5 | 10.2 |
| XLT2520HTI | 200 | 2900 | 25 | 30 | 6.6 | 7.9 | 1450 | 1740 | 13.1 | 15.7 | 9.6 | 11.5 |
| XLT2720HTI | 200 | 2900 | 27 | 32 | 7.1 | 8.5 | 1450 | 1740 | 13.7 | 16.4 | 10.1 | 12.1 |
| XLT3020HTI | 200 | 2900 | 30 | 36 | 7.9 | 9.5 | 1450 | 1740 | 15.3 | 18.4 | 11.3 | 13.6 |
| XLT3320HTI | 200 | 2900 | 33 | 40 | 8.7 | 10.4 | 1450 | 1740 | 16.9 | 20.3 | 12.5 | 15.0 |
| XLT4217HTI | 170 | 2465 | 42 | 50 | 11.2 | 13.4 | 1450 | 1740 | 18.5 | 22.2 | 13.6 | 16.3 |

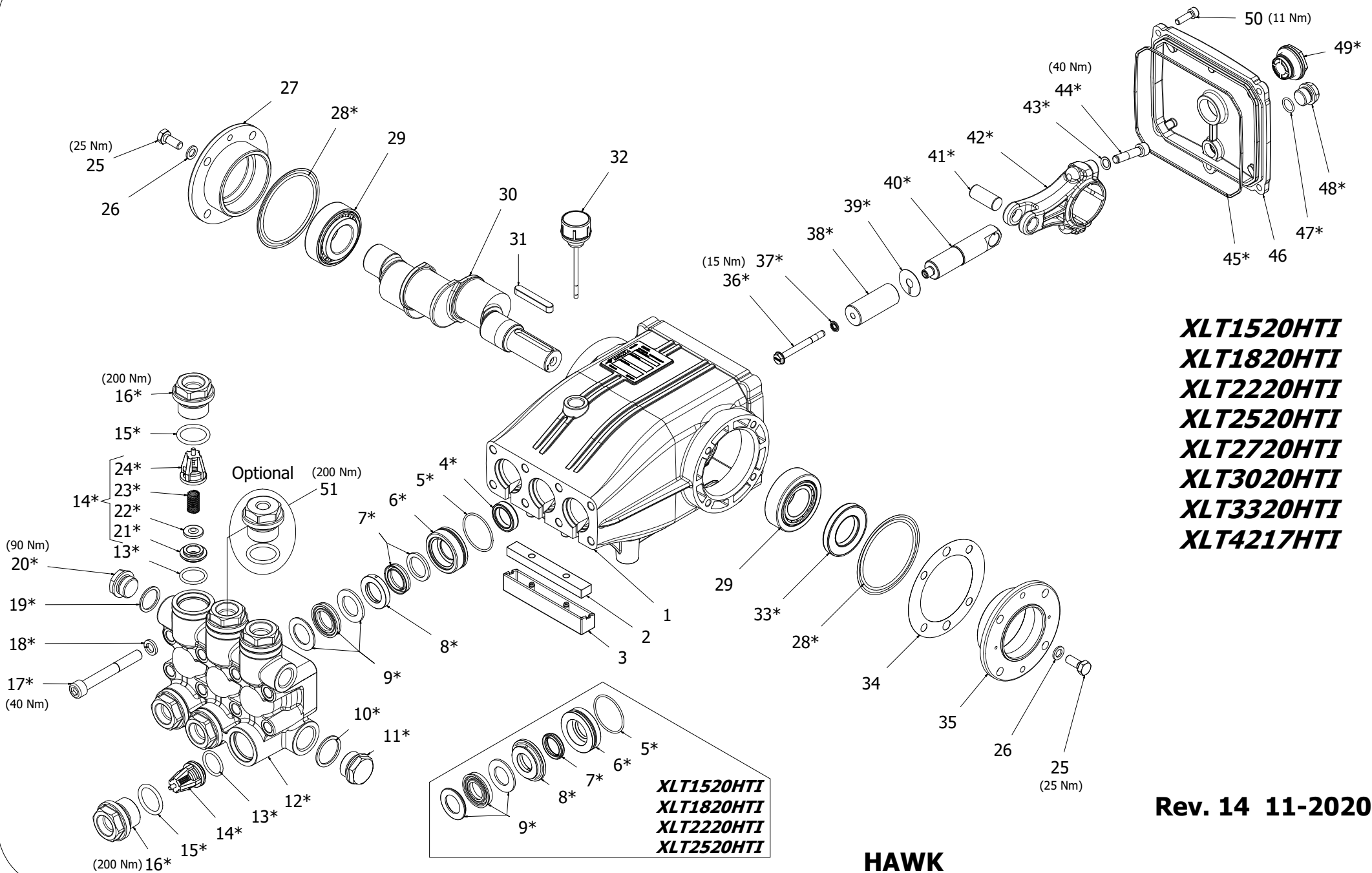
Dimensioni d'ingombro

Overall dimensions



Lubrificazione: Olio SAE 10W40
 Capacità: 1.2 Litri
 Peso pompa: 17.8 kg

Lubrication: SAE 10W40 Oil
 Capacity: 1.2 Litres
 Weight: 17.8 kg



***XLT1520HTI
XLT1820HTI
XLT2220HTI
XLT2520HTI
XLT2720HTI
XLT3020HTI
XLT3320HTI
XLT4217HTI***

Rev. 14 11-2020

**HAWK
Pompe XLT HT I serie 2015
XLT HT I pumps 2015 series**

XLT HT I 2015 SERIES

ORDINARY MAINTENANCE KIT / KIT MANUTENZIONE ORDINARIA

| KIT | Item Pos. | Part Number Codice | Description | Descrizione | Q.TY by Pump Q.TA per Pompa | XL T1520HTI | XL T1820HTI | XL T2220HTI | XL T2520HTI | XL T2720HTI | XL T3020HTI | XL T3320HTI | XL T4217HTI |
|-----|---------------------------------|--------------------|--------------------------|-------------------------|--------------------------------|-------------|-------------|-------------|-------------|-------------|-------------|-------------|-------------|
| | | | | | | | | | | | | | |
| A | 5- 7- 9 | 1.099-855.0 | PLUNGER SEALS DIA. 20 mm | GUARNIZIONI PISTONE Ø20 | 1 | • | • | • | • | | | | |
| | 5- 7- 9 | 1.099-861.0 | PLUNGER SEALS DIA. 22 mm | GUARNIZIONI PISTONE Ø22 | | | | | | | • | • | • |
| B | 13- 14 (21 22- 23- 24) 15 | 1.905-687.0 | COMPLETE VALVE | VALVOLA COMPLETA | 1 | • | • | • | • | • | • | • | • |

EXTRAORDINARY MAINTENANCE KIT / KIT MANUTENZIONE STRAORDINARIA

| KIT | Item Pos. | Part Number Codice | Description | Descrizione | Q.TY by Pump Q.TA per Pompa | XL T1520HTI | XL T1820HTI | XL T2220HTI | XL T2520HTI | XL T2720HTI | XL T3020HTI | XL T3320HTI | XL T4217HTI |
|-----|--|--------------------|-----------------------------------|--|--------------------------------|-------------|-------------|-------------|-------------|-------------|-------------|-------------|-------------|
| | | | | | | | | | | | | | |
| C | 5- 6- 7- 8- 9 | 1.905-644.0 | COMPLETE SEALS PACKING DIA. 20 mm | PACCO COMPLETO GUARNIZIONI PISTONE Ø20 | 1 | • | • | • | • | | | | |
| | | 1.905-855.0 | COMPLETE SEALS PACKING DIA. 22 mm | PACCO COMPLETO GUARNIZIONI PISTONE Ø22 | | | | | | | • | • | • |
| D | 36- 37- 38 39 | 1.099-763.0 | PLUNGER DIA. 20 mm | PISTONE Ø20 | 3 | • | • | • | | | | | |
| | | 1.099-776.0 | PLUNGER DIA. 22 mm | PISTONE Ø22 | | | | | | | • | • | • |
| E | 4 | 1.905-545.0 | PLUNGER OIL SEALS | ANELLI TENUTA OLIO ASTA | 1 | • | • | • | • | • | • | • | • |
| F | 28- 33- 45 47- 48- 49 | 1.905-613.0 | KIT CRANKCASE SEALS | KIT TENUTE CARTER | 1 | • | • | • | • | • | • | • | • |
| G | 5- 6- 7- 8 9- 10- 11- 12 13- 14 (21 22- 23- 24) 15- 16- 17 18- 19- 20 | 1.099-859.0 | COMPLETE MANIFOLD 20 | TESTATA COMPLETA Ø20 | 1 | • | • | • | • | | | | |
| | | 1.099-860.0 | COMPLETE MANIFOLD 22 | TESTATA COMPLETA Ø22 | | | | | | | | • | • |
| H | 40- 41- 42 43- 44 | 1.904-180.0 | CONNECTING ROD PLUNGER ROD ASSY | PREMONTATO ASTA-BIELLA PISTONE | 1 | • | • | • | • | | | | |
| | | 1.904-182.0 | CONNECTING ROD PLUNGER ROD ASSY | PREMONTATO ASTA-BIELLA PISTONE | | | | | | | | • | • |
| I | 15- 16 | 1.904-325.0 | VALVE PLUG ASSY | PREMONTATO TAPPO VAM | 1 | • | • | • | • | • | • | • | • |

“Q.TY by Pump” => Necessary quantity to repair one pump
 “Q.TA’ per Pompa” => Quantità necessaria per riparare una pompa

OPTIONAL

| Item Pos. | Part Number Codice | Description | Descrizione | Q.TY by Pump Q.TA per Pompa | XLT1520HTI | XLT1820HTI | XLT2220HTI | XLT2520HTI | XLT2720HTI | XLT3020HTI | XLT3320HTI | XLT4217HTI |
|-----------|--------------------|--------------------------|-------------------------|-----------------------------|------------|------------|------------|------------|------------|------------|------------|------------|
| 51 | 9.853-427.0 | THREADED BRASS PLUG G1/4 | PREMONTATO TAPPO FORATO | 1 | • | • | • | • | • | • | • | • |

TOOL KIT

| Part Number Codice | Description | Descrizione | Q.TY by Pump Q.TA per Pompa | XLT1520HTI | XLT1820HTI | XLT2220HTI | XLT2520HTI | XLT2720HTI | XLT3020HTI | XLT3320HTI | XLT4217HTI |
|--------------------|-----------------------------|-------------------------|-----------------------------|------------|------------|------------|------------|------------|------------|------------|------------|
| 1.099-665.0 | TOOL-KIT | TOOL-KIT | 1 | • | • | • | • | • | • | • | • |
| 1.905-659.0 | OIL SEAL EXTRACTOR TOOL-KIT | TOOL-KIT ESTR. PARAOLIO | 1 | | | | | | | | |

IMPORTANT

IMPORTANTE

* Part available ONLY in kit
Disponibile SOLO in kit

(...) Parts pre-assembled
Parti pre-assemblate

PARTS LIST LISTA PARTI

| Item Pos | Part Number Codice | Description | Descrizione | KIT | Q.TY Q.TA | XL T1520HTI | XL T1820HTI | XL T2220HTI | XL T2520HTI | XL T2720HTI | XL T3020HTI | XL T3320HTI | XL T4217HTI |
|----------|--------------------|----------------------------------|------------------------|-------|--------------|-------------|-------------|-------------|-------------|-------------|-------------|-------------|-------------|
| | | | | | | | | | | | | | |
| 1 | 9.850-377.0 | CRANKCASE | CARTER | | 1 | | | | | | | | |
| 2 | 9.851-277.0 | POLYESTER FIBER SPONGE | SPUGNA POLIESTERE | | 1 | | | | | | | | |
| 3 | 9.851-443.0 | DRAINAGE TANK | VASCETTA | | 1 | • | • | • | • | • | • | • | • |
| 4* | | PLUNGER OIL SEAL | ANELLO RADIALE | E | 3 | | | | | | | | |
| 5* | | "O" RING Ø1.78X37.82 | "O" RING Ø1.78X37.82 | A-C-G | 3 | | | | | | | | |
| 6* | | PRESSURE RING 20MM | PRESSORE "U" Ø20 | C-G | 3 | • | • | • | • | | | | |
| | | PRESSURE RING 22MM | PRESSORE "U" Ø22 | | | | | | | | • | • | • |
| 7* | | LOW PRESSURE "U" SEAL, DIA.20MM | ANELLO TENUTA "U" Ø20 | A-C-G | 3 | • | • | • | • | | | | |
| | | LOW PRESSURE "U" SEAL, DIA.22MM | ANELLO TENUTA "U" Ø22 | | | | | | | | • | • | • |
| 8* | | INTERMED. RING 20MM | DIFFUSORE INTER. Ø20 | C-G | 3 | • | • | • | • | | | | |
| | | INTERMED. RING 22MM | DIFFUSORE INTER. Ø22 | | | | | | | | • | • | • |
| 9* | | HIGH PRESSURE "U" SEAL, DIA.20MM | ANELLO TENUTA "U" Ø20 | A-C-G | 3 | • | • | • | • | | | | |
| | | HIGH PRESSURE "U" SEAL, DIA.22MM | ANELLO TENUTA "U" Ø22 | | | | | | | | • | • | • |
| 10* | | COPPER WASHER G 3/4 | GUARNIZIONE RAME G 3/4 | G | 1 | | | | | | | | |
| 11* | | BRASS PLUG G 3/4 | TAPPO G3/4 | G | 1 | | | | | | | | |
| 12* | | MANIFOLD HOUSING 22/20 | TESTATA Ø22/20 | G | 1 | | | | | | | | |
| 13* | | "O" RING Ø2.62X21.89 | "O" RING Ø2.62X21.89 | B-G | 6 | | | | | | | | |
| 14* | | VALVE ASSEMBLY | VALVOLA PREMONTATA | B-G | 6 | | | | | | | | |
| 15* | | "O" RING Ø2.62X25.80 | "O" RING Ø2.62X25.80 | B-G | 6 | | | | | | | | |
| 16* | | VALVE PLUG | TAPPO VALVOLA | G | 6 | | | | | | | | |
| 17* | | MANIFOLD STUD BOLT | VITE M10X80 GEOMET | G | 8 | | | | | | | | |
| 18* | | LOCK-WASHER | ROSETTA ELASTICA | G | 8 | | | | | | | | |
| 19* | | COPPER WASHER G1/2 | GUARNIZIONE RAME G1/2 | G | 1 | • | • | • | • | • | • | • | • |
| 20* | | BRASS PLUG G1/2 | TAPPO G1/2 | G | 1 | | | | | | | | |
| 21* | | VALVE SEAT | SEDE VALVOLA | B-G | 6 | | | | | | | | |
| 22* | | VALVE PLATE | PIATTELLO VALVOLA | B-G | 6 | | | | | | | | |
| 23* | | VALVE SPRING | MOLLA VALVOLA | B-G | 6 | | | | | | | | |
| 24* | | VALVE CAGE | GABBIA VALVOLA | B-G | 6 | | | | | | | | |
| 25 | 9.851-503.0 | HEXAGONAL SCREW | VITE M8X20 | | 8 | | | | | | | | |
| 26 | 9.851-114.0 | WASHER DIA. 8.5 | ROSETTA Ø8.5 | | 8 | | | | | | | | |
| 27 | 9.850-620.0 | CLOSED BEARING HOUSING | FLANGIA CHIUSA | | 1 | | | | | | | | |
| 28* | | "O" RING Ø2.62X71.12 | "O" RING Ø2.62X71.12 | F | 2 | | | | | | | | |
| 29 | 9.850-347.0 | ROLLER BEARING | CUSCINETTO A RULLI | | 2 | | | | | | | | |
| 30 | 9.850-191.0 | CRANKSHAFT DIA. 24 MM | ALBERO Ø24 | | 1 | | | | | | | | • |
| | 9.850-192.0 | " " " " | " " | | | | | • | | • | | | |
| | 9.850-193.0 | " " " " | " " | | | | | | | • | | • | |
| | 9.850-194.0 | " " " " | " " | | | | • | | | | | | |
| | 9.850-195.0 | " " " " | " " | | | | | | | | | | • |
| | 9.850-222.0 | " " " " | " " | | | | • | | | | | | |

| Item Pos | Part Number Codice | Description | Descrizione | KIT | Q.T Y Q.T A | XL T1520HTI | XL T1820HTI | XL T2220HTI | XL T2520HTI | XL T2720HTI | XL T3020HTI | XL T3320HTI | XL T4217HTI |
|----------|--------------------|-----------------------|-----------------------|-----|-------------|-------------|-------------|-------------|-------------|-------------|-------------|-------------|-------------|
| | | | | | | | | | | | | | |
| 31 | 9.850-447.0 | CRANKSHAFT KET | CHIAVETTA | | 1 | | | | | | | | |
| 32 | 9.851-287.0 | OIL DIP STICK | TAPPO LIVELLO OLIO | | 1 | | | | | | | | |
| 33* | | CRANKSHAFT SEAL | ANELLO RADIALE | F | 1 | | | | | | | | |
| 34 | 9.850-546.0 | SHIM | DISTANZIALE | | 1 | • | • | • | • | • | • | • | • |
| 35 | 9.850-610.0 | BEARING HOUSING | FLANGIA APERTA | | 1 | | | | | | | | |
| 36* | | PLUNGER BOLT | VITE PISTONE | D | 3 | | | | | | | | |
| 37* | | COPPER SPACER | ROSETTA RAME | D | 3 | | | | | | | | |
| 38* | | PLUNGER DIA. 20 MM | PISTONE Ø20 | D | 3 | • | • | • | • | | | | |
| | | PLUNGER DIA. 22 MM | PISTONE Ø22 | D | | | | | | • | • | • | • |
| 39* | | COPPER SPACER | ROSETTA RAME | D | 3 | • | • | • | • | • | • | • | • |
| 40* | | PLUNGER ROD | ASTA PISTONE | H | 3 | • | • | • | • | | | | |
| | | PLUNGER ROD | ASTA PISTONE | H | | | | | | • | • | • | • |
| 41* | | CONNECTING ROD PIN | SPINOTTO | H | 3 | | | | | | | | |
| 42* | | CONNECTING ROD | BIELLA | H | 3 | | | | | | | | |
| 43* | | SPRING WASHER | ROSETTA ELASTICA Ø8 | H | 6 | | | | | | | | |
| 44* | | CONNECTING ROD SCREW | VITE BIELLA | H | 6 | | | | | | | | |
| 45* | | "O" RING Ø2.62X152.07 | "O" RING Ø2.62X152.07 | F | 1 | | | | | | | | |
| 46 | 9.850-389.0 | CRANKCASE COVER | COPERCHIO | | 1 | • | • | • | • | • | • | • | • |
| 47* | | "O" RING Ø1.78X14.00 | "O" RING Ø1.78X14.00 | F | 1 | | | | | | | | |
| 48* | | BRASS PLUG G 3/8 | TAPPO OTTONE G 3/8 | F | 1 | | | | | | | | |
| 49* | | SIGHT GLASS, G 3/4 | SPIA LIVELLO OLIO | F | 1 | | | | | | | | |
| 50 | 9.851-474.0 | COVER SCREW | VITE COPERCHIO | | 5 | | | | | | | | |